

## Features

- Double offset design reduces torque and seal wear
- High quality, passivated 316SS (CF8M) construction for superior corrosion protection
- Multiple RPTFE V-type rings for superior shaft sealing
- Bolted seat retainer keeps seat stable and allows easy changeout
- Belleville washers for consistent, self-adjusting stem seal pressure
- One piece, reinforced Teflon (RPTFE) seal
- Bi-directional seal design ensures increased sealing force in either flow direction
- Visual valve position indicator
- Rugged aluminum Type 4X weatherproof enclosure
- Heavy duty motors with overload protection
- Thermostatically controlled anti-condensation heater
- Manual override with end of travel mechanical stops
- Two auxiliary position confirmation limit switches
- EPS - Electronic Positioning System models available
- Actuators CSA Listed per UL429 and CSA C22.2

## Applications

High performance wafer butterfly valves are used to control the flow of waters, oils, air, certain caustics, and other media compatible with the materials of construction for general service and where an expanded temperature range or higher pressure is required. Actuators designed for 70% duty cycle.

## Operation

On-Off electric actuated valve uses power-to-open and power-to-close, stays in the last known position with loss of power. On receipt of a continuous voltage signal, the motor runs and via a rugged all metal gear system rotates the ball 90°. The motor is automatically stopped by internal cams striking limit switches. On receipt of a reversing continuous signal, the motor turns in the opposite direction reversing the valve position. Power connections direct to terminal strip via included cable connector, or optional 1/2" NPT conduit adapters.

## Construction

<b>Valve Body</b>	316 stainless steel CF8M
<b>Disc</b>	316 stainless steel CF8M
<b>Disc Seat/ Stem Packing</b>	RPTFE
<b>Stem</b>	17-4PH SS
<b>Gear Drive</b>	Heavy duty alloy steel/ aluminum bronze, self locking
<b>Actuator Enclosure</b>	Aluminum, polyester powder painted, Type 4X, IP67
<b>Visual Valve Position Indicator</b>	Clear Polycarbonate cover, red/yellow open-closed
<b>Fasteners</b>	Stainless Steel
<b>Auxiliary Limit Switches</b>	2 x SPDT (5A/125VAC), on-off actuators only



## Description

Electric operated direct mount high performance butterfly valves with 316 stainless steel wafer body are designed for commercial and industrial applications. Valve mounts between two standard ANSI/ASME Class 125/150 flanges. Disc is spherically machined 316SS. Flange gaskets required. Double offset design to reduce seal wear. Rugged corrosion resistant electric actuator includes a manual override, valve position confirmation switches (on-off units), thermostatically controlled anti-condensation heater, and over-torque protection.

## Approvals

### Actuators

- CSA Listed to:
  - UL429 and CSA C22.2 no 139
  - Type 4X, IP67 weatherproof enclosure
- CE conformance– EN60204-1:2006
- ISO5211 Mounting



### Valves– Standards

- Pressure- ANSI/ASME B16.5 CLASS150
- JIS B 2239 10K, 16K
- Top Flange– ISO 5211
- Face– API 609 Class B
- Leakage- ISO 5208 Category 3
- API 598 Table 5
- EN1092-1 PN 16 PN 25
- AS2129 Table D Table E
- CE Conformance– PED 2014/68/EU Annex III Module B



### Specifications (English units)

Stock Number	Pipe Size (inch)	Orifice Diam. (inch)	Cv Flow Factor	Pressure Max. (PSI)	Cycle Time/90° (seconds)	Voltage	Current (amps)	Duty Cycle	Electrical Dwg.
<b>120 VAC ELECTRIC ACTUATED HIGH PERFORMANCE WAFER BODY BUTTERFLY VALVE, RPTFE SEALS</b>									
569103A	3	2.8	180	285	30/25	110 VAC, 50/60Hz	0.6	70%	B
569104A	4	3.6	375	285	30/25	110 VAC, 50/60Hz	0.6	70%	B
569106A	6	5.7	1350	285	30/25	110 VAC, 50/60Hz	0.7	70%	B
569108A	8	7.6	2800	285	45/37	110 VAC, 50/60Hz	1.3	70%	B
<b>24 VDC ELECTRIC ACTUATED HIGH PERFORMANCE WAFER BODY BUTTERFLY VALVE, RPTFE SEALS</b>									
569303A	3	2.8	180	285	30	DC24	2.0	70%	G
569304A	4	3.6	375	285	30	DC24	2.0	70%	G
569306A	6	5.7	1350	285	30	DC24	3.6	70%	G
569308A	8	7.6	2800	285	45	DC24	6.0	70%	G

Cv = The GPM of water at 60° F that will pass through the valve with 1 PSI pressure drop

\* Consult compatibility chart for other fluid media. Suitable for vacuum up to 29 inHg

\* See P/T Chart (Page 4)

### Specifications (Metric units)

Stock Number	Pipe Size (DN)	Orifice Diam. (mm)	Kv Flow Factor	Pressure Max. (Bar)	Cycle Time/90° (seconds)	Voltage	Current (amps)	Duty Cycle	Electrical Dwg.
<b>120 VAC ELECTRIC ACTUATED HIGH PERFORMANCE WAFER BODY BUTTERFLY VALVE, RPTFE SEALS</b>									
569103A	80	72.0	155.7	19.7	30/25	110 VAC, 50/60Hz	0.6	70%	B
569104A	100	91.0	324.4	19.7	30/25	110 VAC, 50/60Hz	0.6	70%	B
569106A	150	145.0	1167.8	19.7	30/25	110 VAC, 50/60Hz	0.7	70%	B
569108A	200	188.0	2422.0	19.7	45/37	110 VAC, 50/60Hz	1.3	70%	B
<b>24 VDC ELECTRIC ACTUATED HIGH PERFORMANCE WAFER BODY BUTTERFLY VALVE, RPTFE SEALS</b>									
569303A	80	72.0	155.7	19.7	30	DC24	2.0	70%	G
569304A	100	91.0	324.4	19.7	30	DC24	2.0	70%	G
569306A	150	145.0	1167.8	19.7	30	DC24	3.6	70%	G
569308A	200	188.0	2422.0	19.7	45	DC24	6.0	70%	G

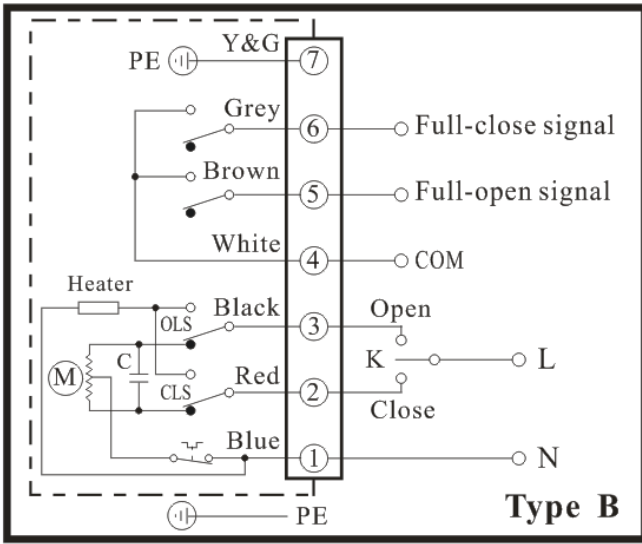
Kv = The number of m<sup>3</sup> per hour of 20° C water at 1 bar pressure drop

\* Consult compatibility chart for other fluid media. Suitable for vacuum up to 29 inHg

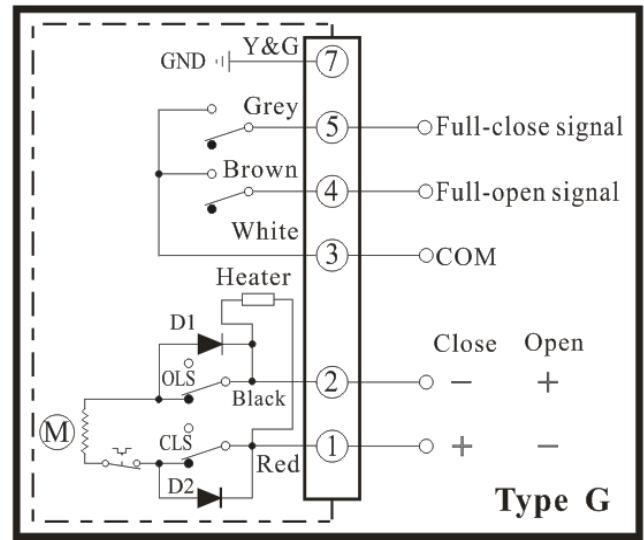
\* See P/T Chart (Page 4)

## Electrical Wiring

### AC Voltages



### DC Voltages

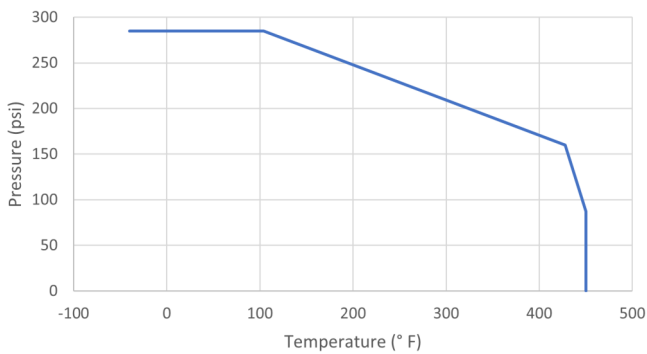


## PT Chart

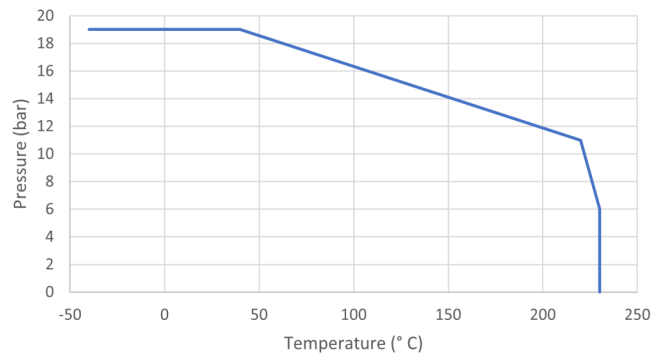
Pressure vs Temperature					
Temp °F	-40	104	428	450	450
Pressure- PSI	285	285	160	87	0

Pressure vs Temperature					
Temp °C	-40	40	220	230	230
Pressure- Bar	19	19	11	6	0

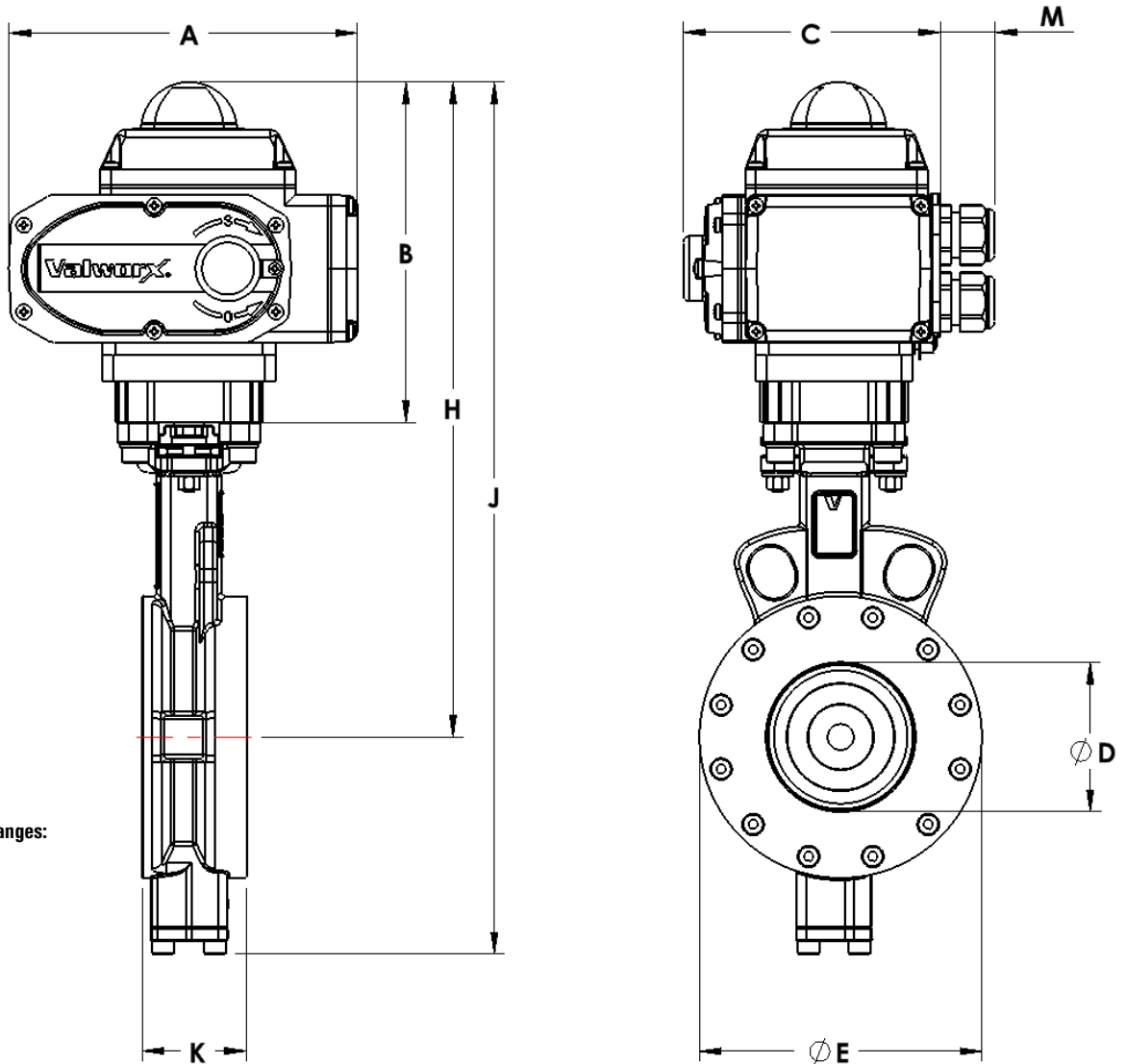
Pressure vs Temperature- Standard Units



Pressure vs Temperature- Metric Units



## Dimensions:



### Valve suitable between flanges:

- ◆ ANSI/ASME B16.5 CLASS150
- ◆ EN1092 PN10, PN16
- ◆ JIS B 2239 10K, 16K
- ◆ BS 10 Table D, Table E

Pipe Size		A	B	C	D	E	H	J	K	M	Weight (AC)
3	inch	7.7	7.1	5.0	2.8	5.2	11.9	15.4	1.9	1.0	18.7 lb
	mm	195.6	180.3	127.0	72	131	302.3	391.2	49	25.4	8.4 kg
4	inch	7.7	7.1	5.0	3.7	6.1	12.4	16.5	2.1	1.0	21.9 lb
	mm	195.6	180.3	127.0	94	155	315.0	419.1	54	25.4	9.9 kg
6	inch	10.1	8.5	6.4	5.5	8.5	15.1	20.5	2.2	1.0	45.4 lb
	mm	256.5	215.9	162.6	140	216	383.5	520.7	57	25.4	20.5 kg
8	inch	10.1	8.5	6.4	7.3	10.6	16.3	23.1	2.5	1.0	57.8 lb
	mm	256.5	215.9	162.6	185	270	414.0	586.7	64	25.4	26.1 kg