

### Features

- Quick close actuator– 2, 4 or 8 second cycle times
- Quarter turn (90°) operation with mechanical travel stops
- Type 4X/IP67 weatherproof aluminum alloy enclosure
- Highly visual dome style valve position indicator
- Manual override
- ISO5211 multi-flange valve mounting
- Heavy duty motors with overload protection
- Thermostatically controlled anti-condensation heater
- Two auxiliary limit switches included
- Approvals - CSA listed per UL429 and CSA C22.2



### Applications

Industrial quality electric actuators typically used to automate quarter turn (90°) ball valves, butterfly valves and dampers. The 5618 series actuator is quick and easy to install with standard ISO5211 multi-flange mounting and a double square drive.

### Operation

Electric actuator uses power-to-open and power-to-close, stays in the last known position with loss of power. On receipt of a continuous voltage signal, the motor runs and via a rugged all metal gear system rotates 90°. The motor is automatically stopped by internal cams striking limit switches. On receipt of a reversing continuous signal, the motor turns in the opposite direction reversing the output drive position. Rugged self-locking all metal gear train eliminates the need for additional braking.

### Construction

Enclosure	Anti-corrosive durable painted aluminum alloy, Type 4X/ IP67
Output Drive	ISO5211 aluminum alloy, female double square
Visual Position Indicator	Yellow with transparent clear dome cover
Gears	Heat treated steel and aluminum bronze, self locking
Fasteners	Stainless Steel
Electrical Connections	Terminal strip, cable connectors, optional 1/2" NPT adapters
Manual Override	Standard hex wrench (included) with protective cover

### Description

Excellent power to size, performance packed electric actuators take the valve automation industry to the next level. Features include rugged motor integral to actuator housing, all metal gears, manual override for emergency hand operation, visual valve position indicator and Type 4X/IP67 weatherproof enclosure. Actuators are certified by CSA per rigorous UL and CSA standards, and also comply with the CE marking. Units include two auxiliary dry contact limit switches used to confirm valve position. Anti-condensation heater is standard and will help protect against condensation build-up inside the actuator.

### Approvals



- CSA Listed per UL429 and CSA C22.2 No. 139-13
- CE conformance– EN 60204-1:2006
- Weatherproof actuator enclosures are Type 4X and IP67

### Construction Features

Auxiliary Limit Switches(2)  
for confirming valve position  
standard

Heavy duty integral motor  
design significantly reduces  
physical size of actuator

Rugged durable painted  
aluminum Type 4X/ IP67  
weatherproof enclosure

ISO5211 International  
standard multi-flange valve  
mounting pad



Visual Dome Style Valve  
Position Indicator

Anti-Condensation Heater

Terminal Box, wire directly to  
terminal strip via supplied  
cable connectors or use  
optional 1/2" NPT conduit  
adapters

Manual Override with  
protective cover

Self-locking all metal gear  
drive, no additional brake  
required

## Selection Guide

Stock Number	Torque		Voltage AC (50/60Hz)	Current F.L.	Cycle Time /90°	Duty Cycle	Valve Mounting ISO5211	Output Drive	Enclosure Type	Data Sheets Page No.
	Nm	in lbs								
ELECTRIC ACTUATORS (ON-OFF)										
561825C/K	30	265	110 VAC	0.8	2	70	F05, F07	14	4X / IP67	4
561850C/K	50	442	110 VAC	0.8	4	70	F05, F07	14	4X / IP67	5
561851C/K	50	442	24 VDC	6.0	4	70	F05, F07	14	4X / IP67	6
561870A/K	200	1770	110 VAC	1.2	8	70	F07, F10	22	4X / IP67	7
561871A/K	200	1770	24 VDC	6.0	8	70	F07, F10	22	4X / IP67	8

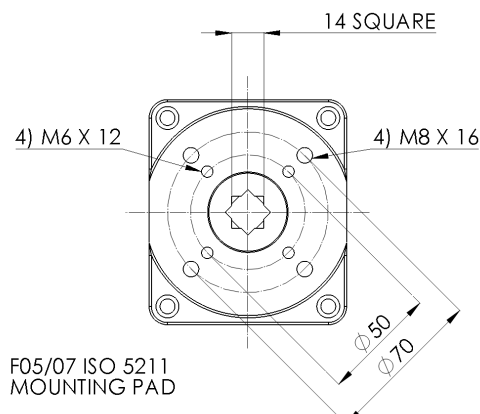
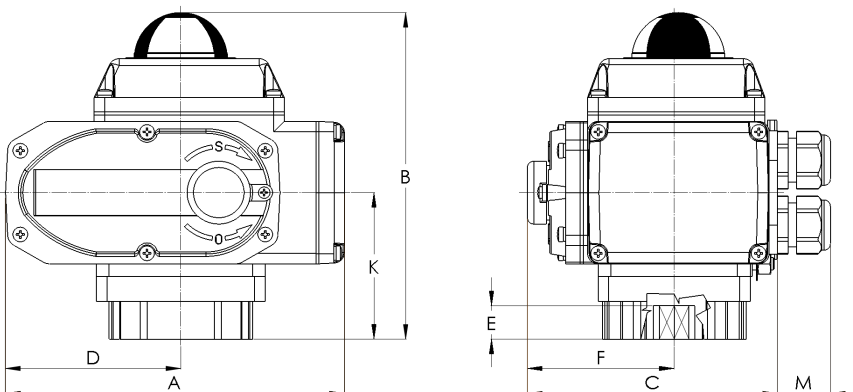
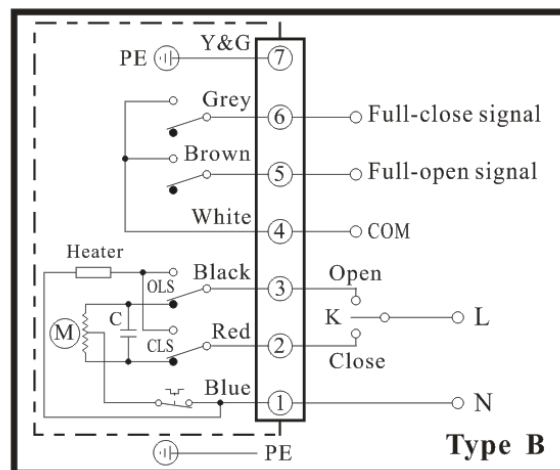
## Electric Actuators

Valworx quarter turn electric actuators use power-to-open and power-to-close, stays in the last known position with loss of power. The actuator will rotate the output drive 90° to open or close ball valves, butterfly valves or other valves requiring a quarter turn function. Limit switches automatically stop the motor drive in either the open or closed position as required.

Specifications	Stock Number <b>561825C/K</b>
Type Operation	On-Off
Max Torque	30Nm/ 265 in lbs
Voltage	110 VAC 50/60Hz +/- 10%
Current - Full Load Amps	0.8 A
Working Time (0-90°/no load)	2 sec
Duty Cycle	70%
Enclosure	Painted aluminum alloy
Enclosure Protection	Type 4X/ (IP67) weatherproof
Electrical Connections (2)	Cable connector (optional 1/2 NPT)
Working Angle Std°	90°
Temperature Range	-13 to 131 °F (-25 to 55 °C)
Motor Protection	Thermal overload
Motor Limit Switches	2 x SPDT
Auxiliary Limit Switches (2)	3A@125/250VAC, 30VDC resistive
Anti-condensation Heater	4 watts
Manual Override	Hex wrench
Valve Mounting per ISO5211	F05, F07
Output Drive DIN3337	14mm (female double square)
Weight	9.9 lbs (4.5 kg)



CSA Listed to UL429  
and CSA C22.2 No.139

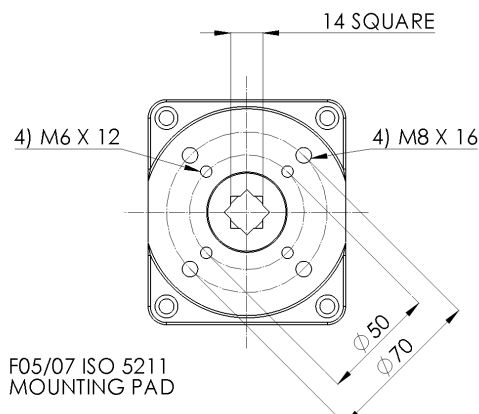
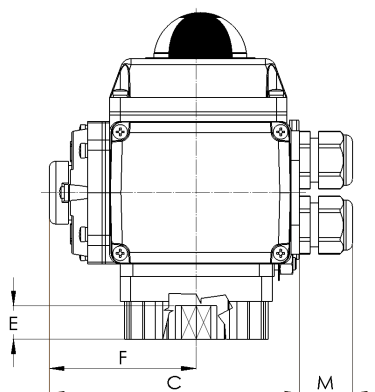
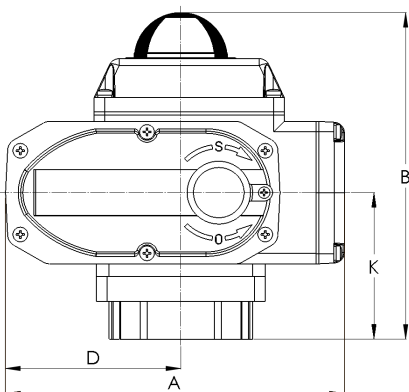
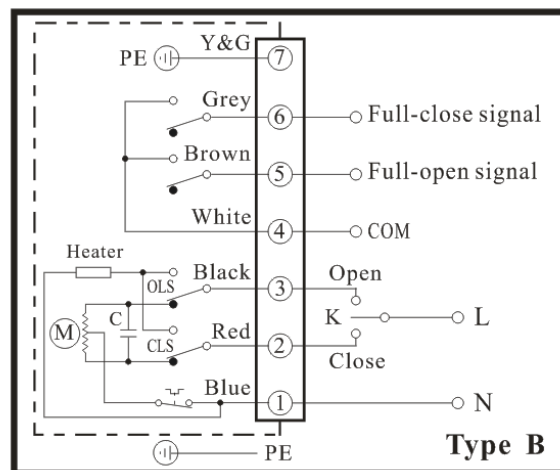


Stock Number		A	B	C	D	E	F	K	M	Weight
<b>561825C/K</b>	inch	7.7	7.1	5.0	3.9	0.8	3.0	3.0	1.0	9.9 lbs
	mm	196.5	180.0	126.0	98.0	19.0	76.0	76.0	25.0	4.5 kg

Specifications	Stock Number <b>561850C/K</b>
Type Operation	On-Off
Max Torque	50Nm/ 442 in lbs
Voltage	110 VAC 50/60Hz +/-10%
Current - Full Load Amps	0.8 A
Working Time (0-90°/no load)	4 sec
Duty Cycle	70%
Enclosure	Painted aluminum alloy
Enclosure Protection	Type 4X (IP67) weatherproof
Electrical Connections (2)	Cable connector (optional 1/2 NPT)
Working Angle Std°	90°
Temperature Range	-13 to 131 °F (-25 to 55 °C)
Motor Protection	Thermal overload
Motor Limit Switches	2 x SPDT
Auxiliary Limit Switches (2)	3A@125/250VAC, 30VDC resistive
Anti-condensation Heater	4 watts
Manual Override	Hex wrench
Valve Mounting per ISO5211	F05, F07
Output Drive DIN3337	14mm (female double square)
Weight	9.9 lbs (4.5 kg)



CSA Listed to UL429  
and CSA C22.2 No.139

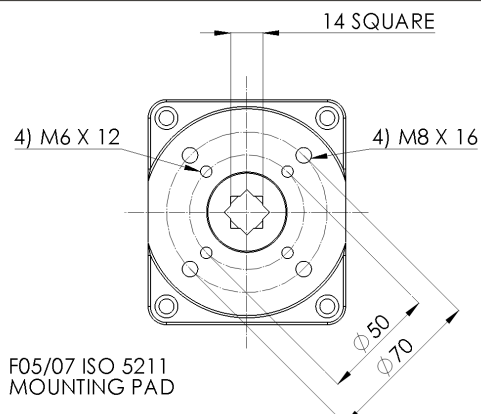
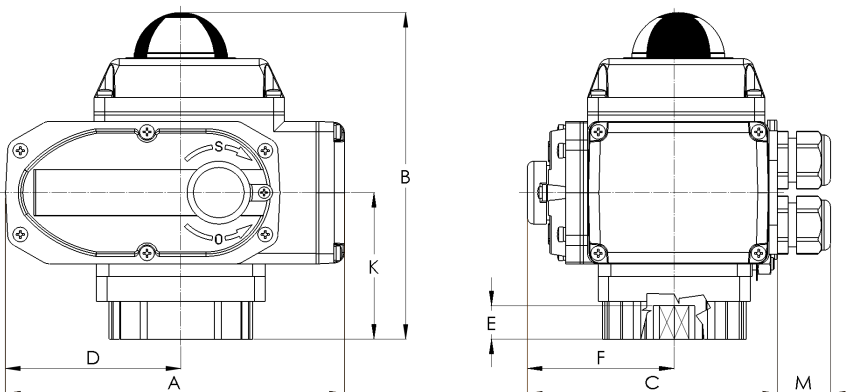
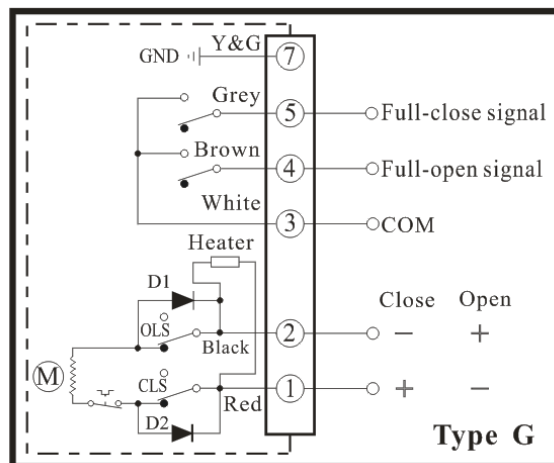


Stock Number		A	B	C	D	E	F	K	M	Weight
<b>561850C/K</b>	inch	7.7	7.1	5.0	3.9	0.8	3.0	3.0	1.0	9.9 lbs
	mm	196.5	180.0	126.0	98.0	19.0	76.0	76.0	25.0	4.5 kg

Specifications	Stock Number <b>561851C/K</b>
Type Operation	On-Off
Max Torque	50Nm/ 442 in lbs
Voltage	24 VDC +/-5%
Current - Full Load Amps	6.0 A
Working Time (0-90°/no load)	4 sec
Duty Cycle	70%
Enclosure	Painted aluminum alloy
Enclosure Protection	Type 4X (IP67) weatherproof
Electrical Connections (2)	Cable connector (optional 1/2 NPT)
Working Angle Std°	90°
Temperature Range	-13 to 131 °F (-25 to 55 °C)
Motor Protection	Thermal overload
Motor Limit Switches	2 x SPDT
Auxiliary Limit Switches (2)	3A@125/250VAC, 30VDC resistive
Anti-condensation Heater	4 watts
Manual Override	Hex wrench
Valve Mounting per ISO5211	F05, F07
Output Drive DIN3337	14mm (female double square)
Weight	9.9 lbs (4.5 kg)



CSA Listed to UL429  
and CSA C22.2 No.139

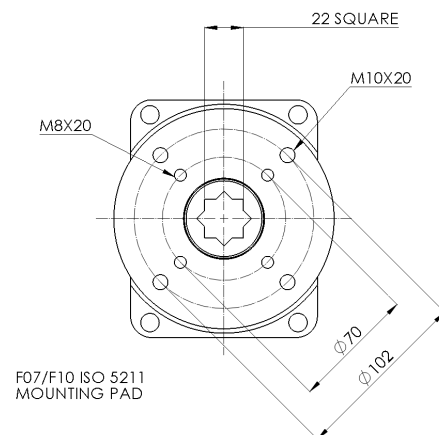
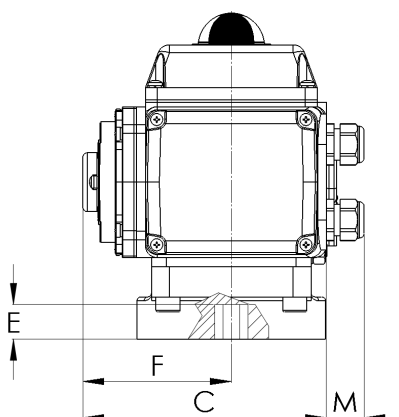
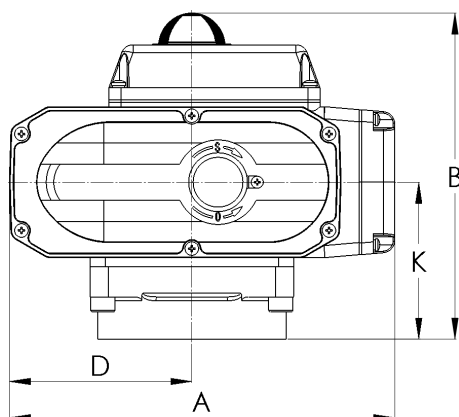
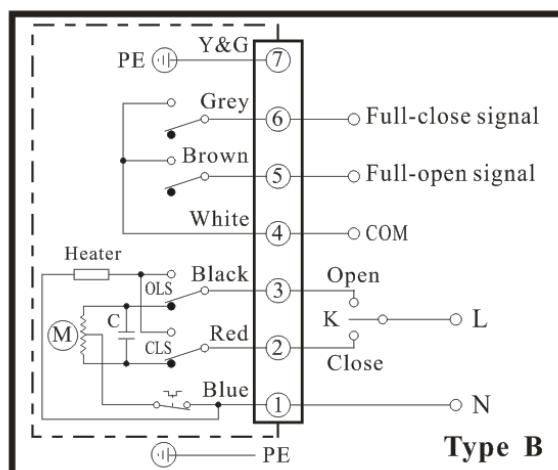


Stock Number		A	B	C	D	E	F	K	M	Weight
<b>561851C/K</b>	inch	7.7	7.1	5.0	3.9	0.8	3.0	3.0	1.0	9.9 lbs
	mm	196.5	180.0	126.0	98.0	19.0	76.0	76.0	25.0	4.5 kg

Specifications	Stock Number <b>561870A/K</b>
Type Operation	On-Off
Max Torque	200Nm/ 1770 in lbs
Voltage	110 VAC 50/60Hz +/-10%
Current - Full Load Amps	1.2 A
Working Time (0-90°/no load)	8 sec
Duty Cycle	70%
Enclosure	Painted aluminum alloy
Enclosure Protection	Type 4X (IP67) weatherproof
Electrical Connections (2)	Cable connector (optional 1/2 NPT)
Working Angle Std°	90°
Temperature Range	-13 to 131 °F (-25 to 55 °C)
Motor Protection	Thermal overload
Motor Limit Switches	2 x SPDT
Auxiliary Limit Switches (2)	3A@125/250VAC, 30VDC resistive
Anti-condensation Heater	4 watts
Manual Override	Hex wrench
Valve Mounting per ISO5211	F07, F10
Output Drive DIN3337	22mm (female double square)
Weight	19.9 lbs (9.0 kg)



CSA Listed to UL429  
and CSA C22.2 No.139



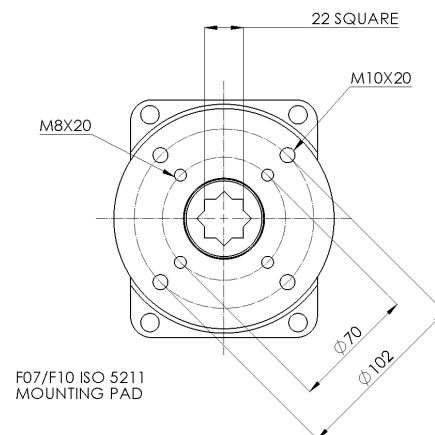
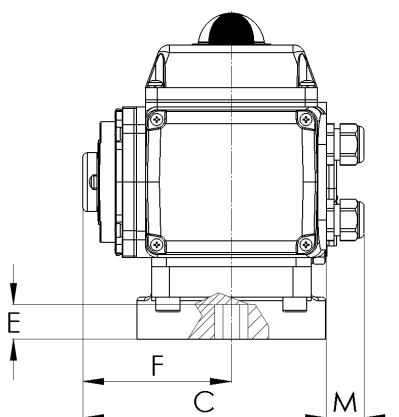
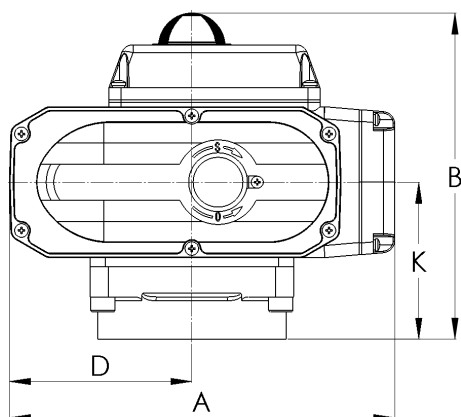
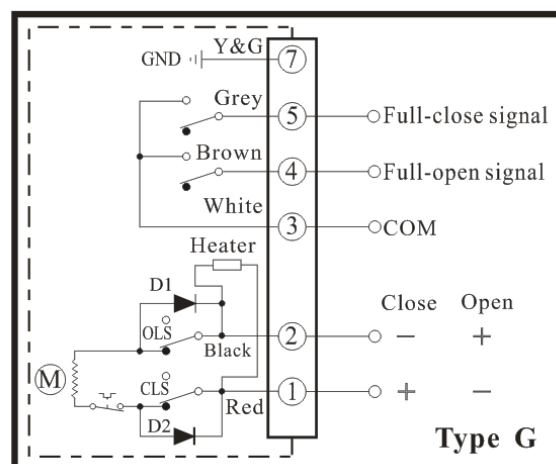
Stock Number		A	B	C	D	E	F	K	M	Weight
<b>561870A/K</b>	inch	10.1	8.5	6.4	4.8	0.9	3.9	4.1	1.0	19.9 lbs
	mm	255.5	216.0	161.5	121.0	23.0	98.5	104.0	25.0	9.0 kg



Specifications	Stock Number <b>561871A/K</b>
Type Operation	On-Off
Max Torque	200Nm/ 1770 in lbs
Voltage	24 VDC +/-5%
Current - Full Load Amps	6.0 A
Working Time (0-90°/no load)	8 sec
Duty Cycle	70%
Enclosure	Painted aluminum alloy
Enclosure Protection	Type 4X (IP67) weatherproof
Electrical Connections (2)	Cable connector (optional 1/2 NPT)
Working Angle Std°	90°
Temperature Range	-13 to 131 °F (-25 to 55 °C)
Motor Protection	Thermal overload
Motor Limit Switches	2 x SPDT
Auxiliary Limit Switches (2)	3A@125/250VAC, 30VDC resistive
Anti-condensation Heater	4 watts
Manual Override	Hex wrench
Valve Mounting per ISO5211	F07, F10
Output Drive DIN3337	22mm (female double square)
Weight	19.9 lbs (9.0 kg)



CSA Listed to UL429  
and CSA C22.2 No.139



Stock Number		A	B	C	D	E	F	K	M	Weight
<b>561871A/K</b>	inch	10.1	8.5	6.4	4.8	0.9	3.9	4.1	1.0	19.9 lbs
	mm	255.5	216.0	161.5	121.0	23.0	98.5	104.0	25.0	9.0 kg